

Literacy for life, literacy for all



National Adult Literacy Agency
Áisíneacht Náisiúnta Litearthachta do Aosaiúgh

Electing local councillors who will promote, protect and prioritise adult literacy

On Friday 24 May this year we vote for our local council representatives for the next five years. We want to elect councillors who value adult literacy, education and lifelong learning. We want to elect councillors who believe in and support:

Investing in literacy – investing in people – investing in society



1. Supporting adult literacy development in the community

Each local authority should identify adult literacy skills as an issue and prioritise and develop local responses to supporting this. Local authorities should develop an **adult literacy plan** as part of their next Local Economic and Community Plan (LECPs).

This plan would contribute to local authority agendas to create more learning cities and counties where there are fun, innovative and relevant opportunities to improve adult literacy, numeracy and digital skills. It could support local communities to harness learning spaces to facilitate and enable learning – for example through the local libraries, the local healthcare centre and local schools.



2. Communicating in plain English

Building on awards won by local authorities for using plain English, all city and county councils should adopt **plain English** for all written, verbal and online communication.



Further information

National Adult Literacy Agency
Sandford Lodge, Sandford Close
Ranelagh, Dublin 6



nalairland



HelpMyKidLearn.ie

Web: www.nala.ie Tel: +353 1 412 7900

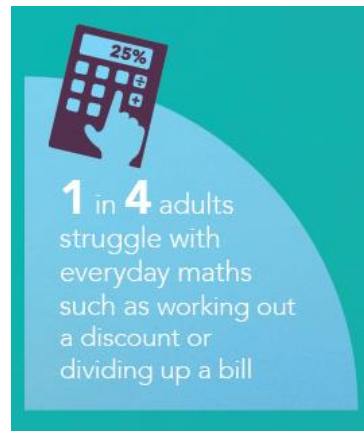
Website for parents to help their children

#LiteracyMatters

Literacy for life, literacy for all – the facts

Literacy promotes equality. Equal societies are happier, healthier and wealthier. Adult learning and education promotes “sustainable development, healthier societies, better jobs and more active citizenship”.¹

Literacy and numeracy needs in Ireland



Unmet adult literacy and numeracy needs have devastating consequences for individuals, communities and the economy and are a factor in social exclusion and inequality (OECD, 2013).

Current response

Currently adults can receive between two and six hours adult literacy tuition per week. There are some longer programmes delivered under Intensive Tuition in Adult Basic Education (ITABE) and some through the Back to Education Initiative (BTEI).

There is no financial support or incentive to return to education for QQI levels 1, 2 or 3, for example tax relief. There is no fulltime childcare or elder care provision or transport costs.

60,000

adults attended literacy classes delivered by the 16 local Education and Training Boards (ETB) in 2017.

This is **11%**

of people who have a literacy need.

¹ UNESCO (2016) [3rd Global Report on Adult Learning and Education](#)